

## PHRF Handicap Form Instructions

This new handicap form is being sent to every skipper. If you race your boat, it is in your best interest to complete this form accurately as it will be the basis from which your racing handicap will be calculated. If you race but do not complete the form, your handicap will be calculated based on the worst-case scenario for your boat and you will be at a disadvantage when racing. If you never intend to race your boat, you do not need to complete this form.

The procedure is as follows:

- Complete the form on your computer following the instructions given below.
- Save the completed form on your computer. Do not change the file format.
- Email the form to the Handicapper at [replusted@aol.com](mailto:replusted@aol.com) for processing.
- Your form will be processed and your handicap calculated.
- Your “**Handicap Certificate**” will be sent back to you for your records.

Complete all the items in the gray shaded boxes. Do not enter any information in the blue box marked “**HANDICAPPER USE ONLY.**”

The upper portion of the form mostly identifies the skipper and the boat. The “**RIG DIMENSIONS**” and “**LARGEST HEADSAIL DIMENSIONS**” are used in formulas that are used to calculate certain adjustments. For example, enter your measurements in either inches (124”) or feet and inches (10’- 4”) or decimal (10.333’). Try to be consistent if possible. If not, the conversion will be made when the form is returned to the Handicapper.

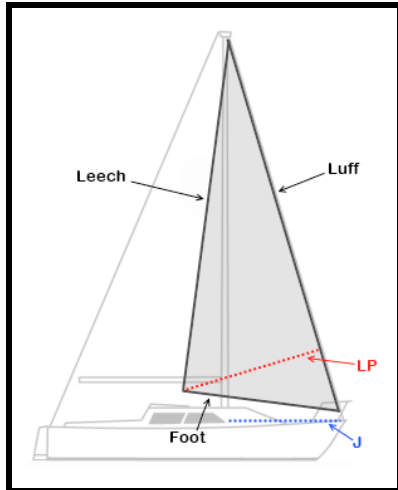
The lower portion of the form identifies specific categories of adjustments. As you select a shaded gray box, a small box will appear next to it with an arrow. Click on it and a drop down box will appear with the allowable selections. Choose the appropriate selection and move on to the next item. Some of the items will have a descriptive yellow box as well.

Most of the information that you have to fill in is self-explanatory. Here are a few items that may need some clarification.

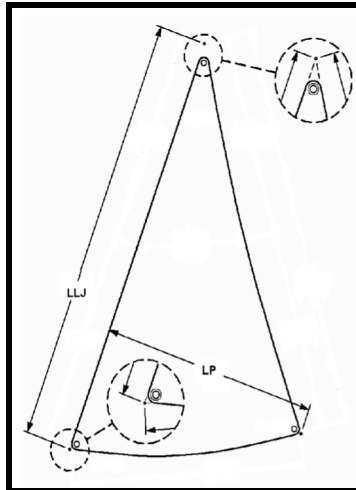
**RIG DIMENSIONS:** If you don’t have the rig dimensions (I, J, P, E) for your boat, you can usually find them in the manufacture’s brochure or at <https://sailboatdata.com>

**LARGEST HEADSAIL DIMENSION:** You must measure the largest headsail that you might use when racing. Enter the luff, leech and foot dimensions. See Drawing A below.

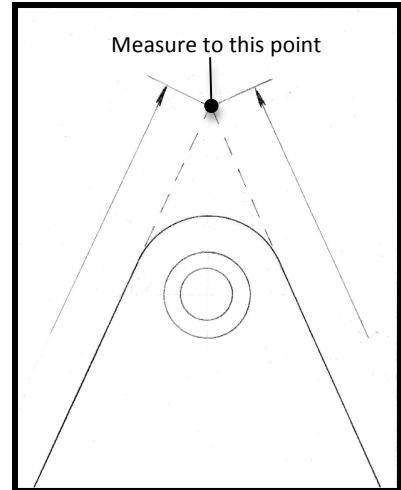
Lay your sail flat on the lawn and put a screwdriver or similar object through the ring or webbing at the tack, head & clew of the sail. Pull each edge of the sail reasonably tight to remove all wrinkles then measure the luff, leech and foot. The “LP” and “J” dimensions are not necessary but you can include them in the “NOTES” section at the bottom of the “Handicap Form.” Measure from the intersection of the extended edges of the sail as shown in Drawing B below and the detail in Drawing C.



Drawing A



Drawing B

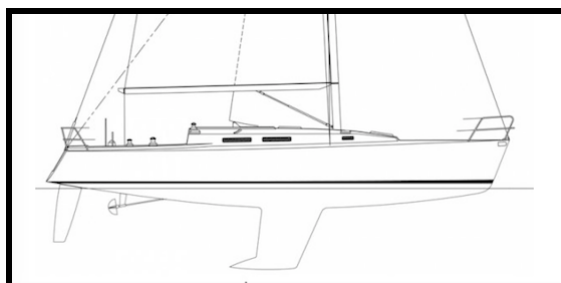


Drawing C

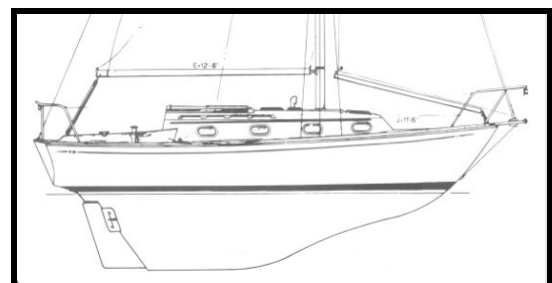
**ARE ALL SAILS DACRON:** Are all of your mainsails and headsails that you use while racing made with panels of woven polyester? (Dacron)

**HEADSAIL SYSTEM:** The non-furling option (#1) should be selected if all of your headsails are hanked on, or if the luffs of all of your sails are attached to a furling system extrusion and the tack and/or head of the sail is not attached to the furling drum or head swivel, or if you have a luff foil system installed on your head stay.

**PROPULSION:** Drawing D below is an example of a prop out of aperture. The prop is attached to a long prop shaft that is supported at the aft end by a strut. Drawing E is an example of a prop in aperture. The prop is attached to a very short shaft that protrudes from directly behind the keel. The prop spins within an opening (aperture) between the keel and the rudder. Select the option that best depicts your boat.



Drawing D



Drawing E

**NOTES:** This section is for miscellaneous notes that you want to convey to the Handicapper such as, but not limited to, an oversized spinnaker, longer mast or boom, hull or rudder modifications, extra large mainsail roach or any changes to your boat that do not meet the standard boat as described in the 2021-2022 PHRF Racing Rules and Regulations.